



Page Street, SW1P | £2,750 Per Month



**TUCKERMAN**  
E S T A T E   A G E N T S  
PROPERTY PROFESSIONALS



# Page Street, Westminster

Nestled in the heart of Westminster on the charming Page Street, this delightful top-floor apartment offers a perfect blend of comfort and convenience. Spanning an impressive 789 square feet, the property features two well-proportioned bedrooms, making it an ideal choice for sharers or a small family seeking a vibrant urban lifestyle.

Upon entering, you are greeted by a bright and airy reception room that invites natural light, creating a warm and welcoming atmosphere. The space is perfect for relaxation or entertaining guests. The apartment boasts two modern bathrooms, ensuring ample facilities for residents and visitors alike.

With the added benefit of lift access, this property combines ease of living with the charm of a top-floor residence. The location is superb, placing you within easy reach of Westminster's iconic landmarks, excellent transport links, and a variety of shops and eateries.







# Page Street, Westminster

**Per Month:**  
£2,750 Per Month subject to contract.

**Tenure:**

**Local Authority:**  
Westminster City Council

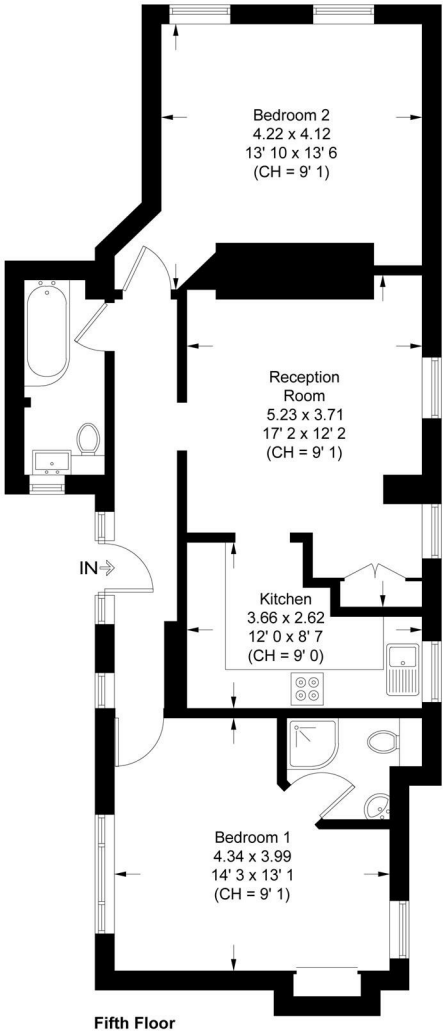
**Council Tax Band:**  
D

**Approximate Gross Internal Area:**  
789.00 sq ft

Energy Efficiency Rating

	Current	Potential
Very energy efficient - lower running costs		
(92 plus) <b>A</b>		
(81-91) <b>B</b>		
(69-80) <b>C</b>		
(55-68) <b>D</b>	58	66
(39-54) <b>E</b>		
(21-38) <b>F</b>		
(1-20) <b>G</b>		
Not energy efficient - higher running costs		
<b>England &amp; Wales</b>	EU Directive 2002/91/EC	

**Bennett House**  
Approximate Gross Internal Area = 789 sq ft / 73.3 sq m



This plan is not to scale and must be used as layout guidance only. All measurements and areas are approximate and should not be relied upon to provide accurate information. This plan must not be relied upon when making property valuations, design considerations or any other such relevant decisions. We accept no responsibility or liability (whether in contract, tort or otherwise) in relation to any loss whatsoever arising from or in connection with any use of this plan or the adequacy, accuracy or completeness of it or any information within it.

020 7222 5510  
info@tuckermanresidential.co.uk  
52 Moreton Street, London, SW1PV 2PB  
www.tuckermanresidential.co.uk

Agents Note: Whilst every care has been taken to prepare these sales particulars, they are for guidance purposes only. All measurements are approximate are for general guidance purposes only and whilst every care has been taken to ensure their accuracy, they should not be relied upon and potential buyers are advised to recheck the measurements

TUCKERMAN  
ESTATE AGENTS  
PROPERTY PROFESSIONALS